

SUN PRINCESS®

From the moment you step aboard Sun Princess®, you know you're somewhere special. Emanating from the dazzling four-story atrium are numerous ways to indulge all your senses. A wine and caviar bar, patisserie, library and shopping gallery tempt you to while away a few blissful hours. And you can play computerized golf, enjoy a relaxing massage, take a jog on deck and soak in a hot tub. Followed by an eventful night of dining, dancing, gaming and romance.



	DECK	
SHIP FACTS	-	• Accommodates 1,950 passengers
	-	• Over 400 balcony staterooms
	-	• Wrap-around Promenade Deck
	-	• 857 feet in length
	-	• 77,000 gross tons
PERSONAL CHOICE DINING®	-	• Bermudan registered
	TRADITIONAL	6 • Regency Dining Room
	ANYTIME	5 • Marquis Dining Room
	SPECIALTY	14 • Sterling Steakhouse
		- • Ultimate Balcony Dining
	CASUAL	5 • Patisserie
		7 • Wine and caviar bar
		8 • Verdi's Pizzeria
		12 • Sundaes ice cream bar
		14 • Terrace Grill (burgers and hot dogs)
14 • 24-hour dining in the Horizon Court		
† • Afternoon tea		
-	• 24-hour room service	
ENTERTAINMENT	THEATERS	7 • Princess Theater
		7 • Vista Show Lounge
	HOT SPOTS	8 • Grand Casino
	LOUNGES	7 • Wheelhouse Bar
		7 • Rendez-vous
7 • Shooting Stars		
7 • Atrium Lounge and Bar		
ACTIVITIES	POOLS	12 • Lotus Spa® Pool (includes 2 hot tubs)
		12 • Riviera Pool (includes 2 hot tubs)
	SPORTS & SPA	12 • Lotus Spa®, gym and fitness area
		12 • Digital golf simulator
		14 • Shuffleboard
	15 • Sports Court	
	ENRICHMENT	5 • World-class art collection, gallery and auctions
		7 • 24-hour Internet Café (wireless access available)
7 • Library and writing room		
† • ScholarShip@Sea®		
SHOPPING	6 • Boutiques (duty-free)	
	7 • Future Cruise Sales	
UNDER 18	KIDS & TEENS	12 • Teen Center
		12 • Youth Center
		15 • Splash pool
		† Location may vary.

The 14- and 28-day Sun Princess sailings are deployed under P&O Cruises Australia. Onboard currency will be in Australian dollars. Some activities and dining options on these P&O voyages may require additional charges, which also will be assessed in Australian dollars. Anytime Dining and Ultimate Balcony Dining are not available on these P&O sailings. For more information on these sailings, see your travel agent, call 1-800-340-7674 or visit pocruises.com.au.

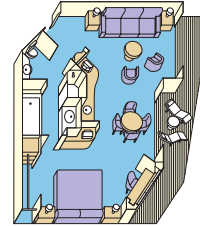
EARLY BOOKING DISCOUNT • RESERVE NOW & SAVE UP TO \$1,900 PER PERSON^

SUN PRINCESS STATEROOMS

Our spacious staterooms are designed with your enjoyment in mind. Each room includes a refrigerator, TV and a personal safe for your convenience, and plush European-style duvets and luxury 100% Egyptian cotton bed linens. Plus, the following amenities for the category of your choice:

SUITE WITH BALCONY

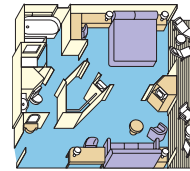
Far more spacious than a mini-suite, a suite with balcony surrounds you with luxurious accommodations. It includes all the deluxe amenities of a mini-suite, plus these premiums: luxury teak balcony furniture, deluxe canapés, fresh flowers, DVD/CD player, free access to a DVD library, one complimentary mini-bar setup, a roomy walk-in closet, upgraded bathroom amenities and complimentary laundry and dry cleaning services, and web access in the Internet Café. Approximately 538 to 695 square feet, including balcony. (Category AA)



Suite with balcony

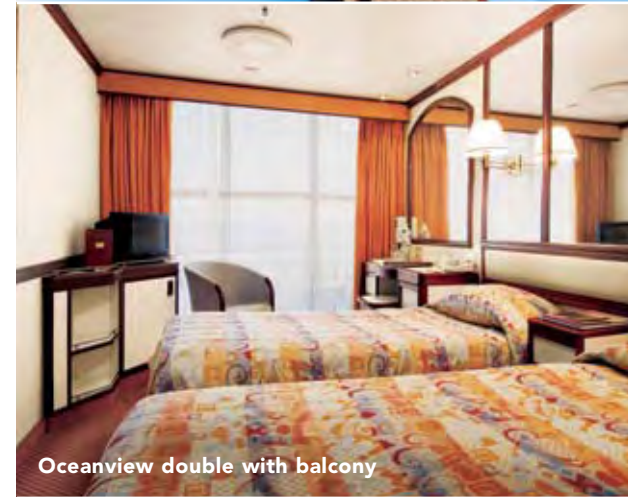
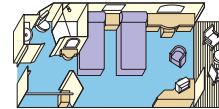
MINI-SUITE WITH BALCONY

A mini-suite with balcony is substantially larger than a balcony stateroom. It includes all the amenities of a balcony stateroom and these added luxuries: welcome glass of champagne, separate sitting area, sofa bed, luxury mattress and pillows, two TVs, a spacious closet, desk, bathroom tub and massage shower head. Approximately 370 to 536 square feet, including balcony. (Categories AB & AC)



OCEANVIEW DOUBLE WITH BALCONY

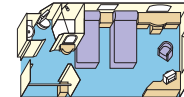
This impressive stateroom offers the elegance of a balcony with fine patio furniture. It offers all the amenities of a standard oceanview stateroom, including a spacious closet and desk. Approximately 179 square feet, including balcony. (Categories BA, BB, BC, BD, BE & BF)



Oceanview double with balcony

OCEANVIEW DELUXE

A slightly larger version of an oceanview double with the same fine amenities, including a picture window. Approximately 197 to 200 square feet. (Category CC, C & DD)



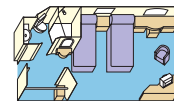
OCEANVIEW DOUBLE

Our oceanview stateroom includes all the amenities of an interior double, plus it features a picture window, providing added ambience and memorable views. Approximately 135 to 155 square feet of space. (Categories D, EE, E, FF, F, GG, G & HH; Categories GG-HH have obstructed views)



INTERIOR DOUBLE

Our interior stateroom is a great value. It features two twin beds that make up into a queen-size bed. Other amenities include a refrigerator, TV, closet and bathroom with shower. Approximately 135 to 148 square feet of space. (Categories II, I, JJ, J, K, L, M & N)



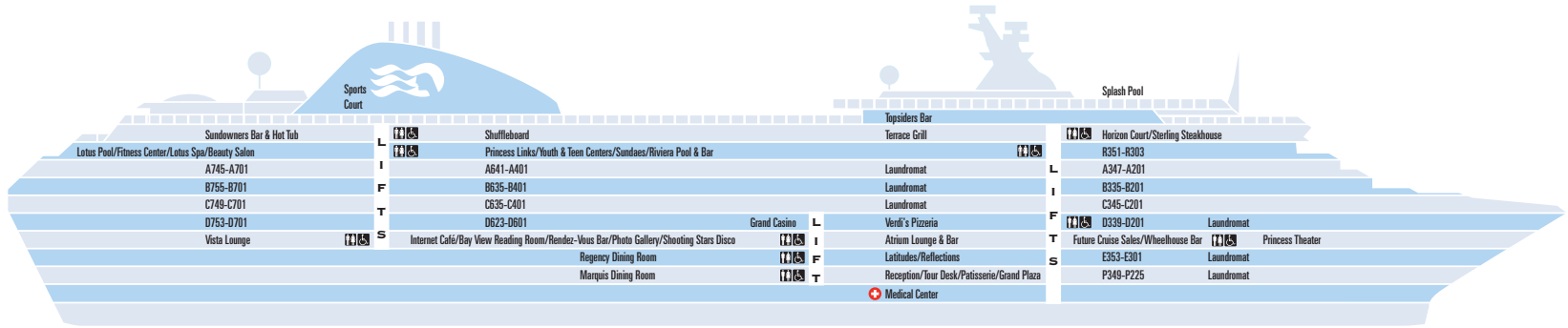
Interior double

Note: Floor plans and stateroom diagrams represent typical arrangements. Certain staterooms may vary in size and configuration. Square footage varies based on stateroom category and deck location. Call 1-800-PRINCESS for more information.

SUN PRINCESS DECK PLANS

- SUN - 15
- LIDO - 14
- RIVIERA - 12
- ALOHA - 11
- BAJA - 10
- CARIBE - 9
- DOLPHIN - 8
- PROMENADE - 7
- EMERALD - 6
- PLAZA - 5
- FIESTA - 4

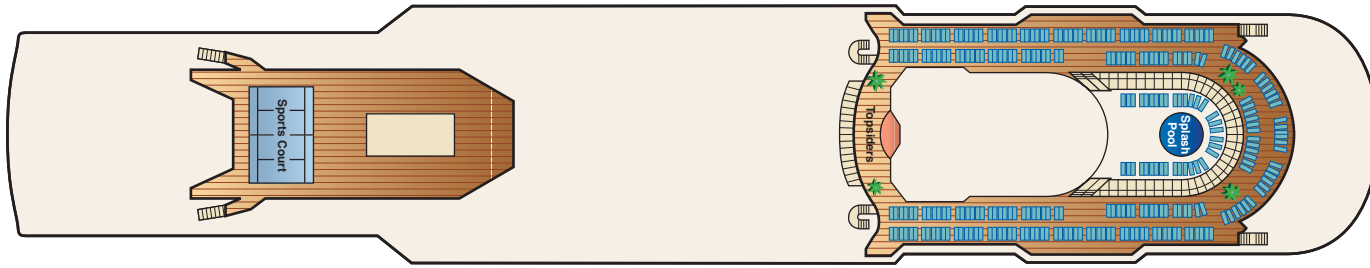
RESTROOMS



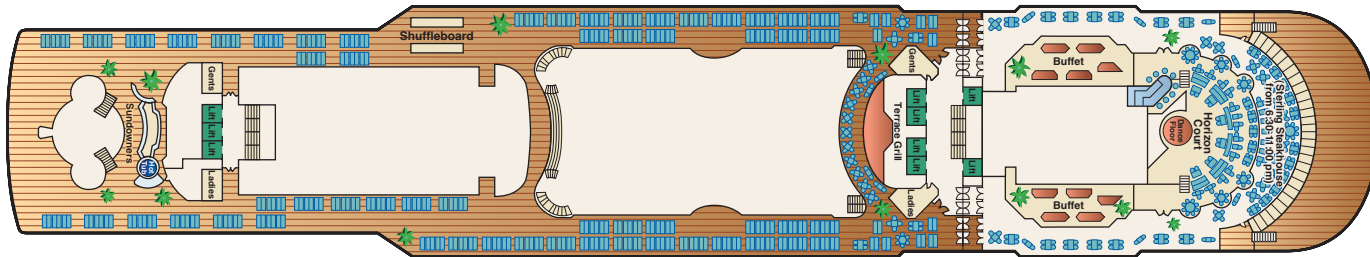
← AFT

Sun 15

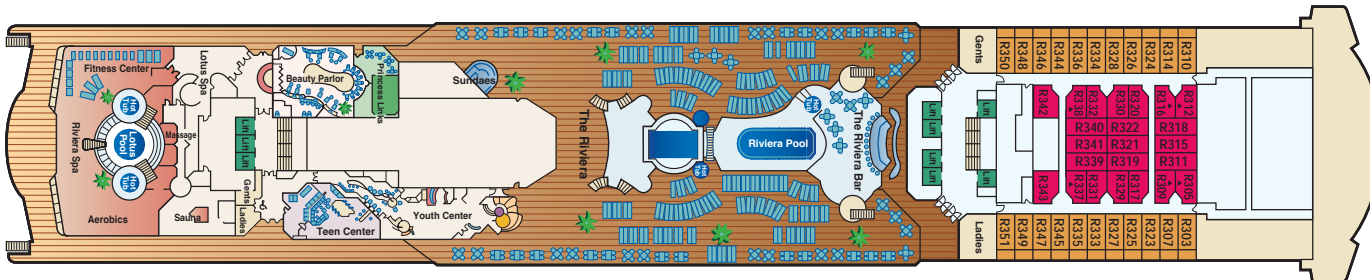
FORWARD →



Lido 14



Riviera 12

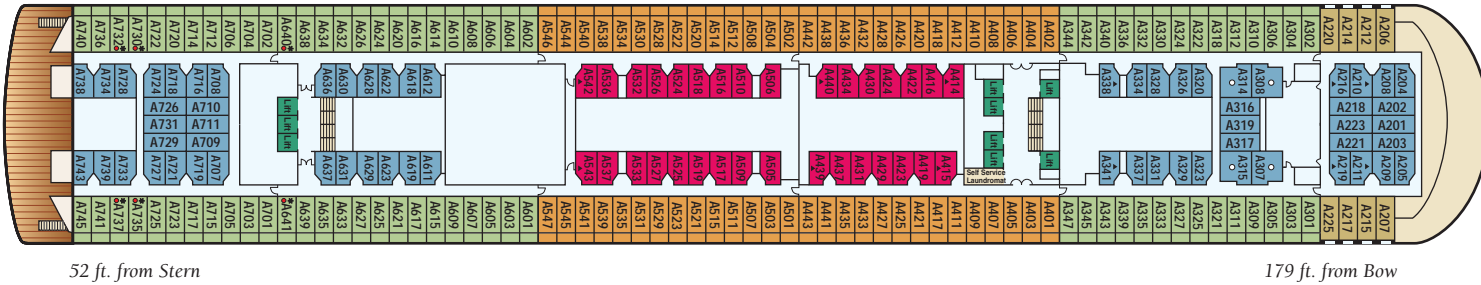


530 ft. from Stern 253 ft. from Bow

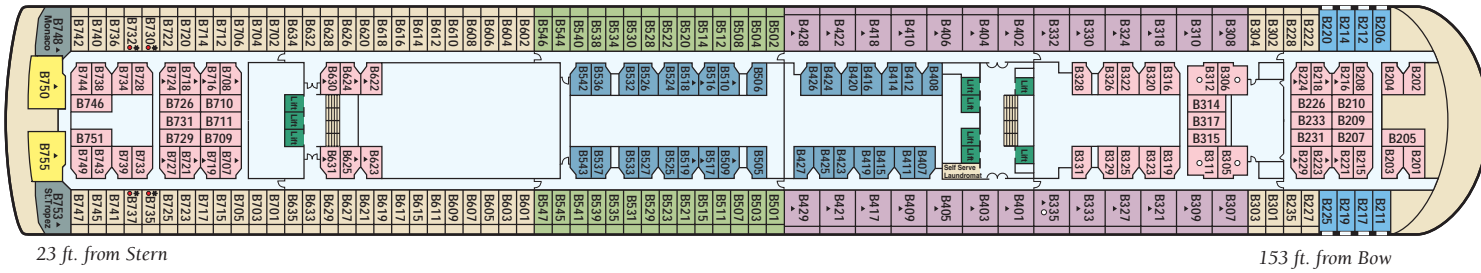
← AFT

FORWARD →

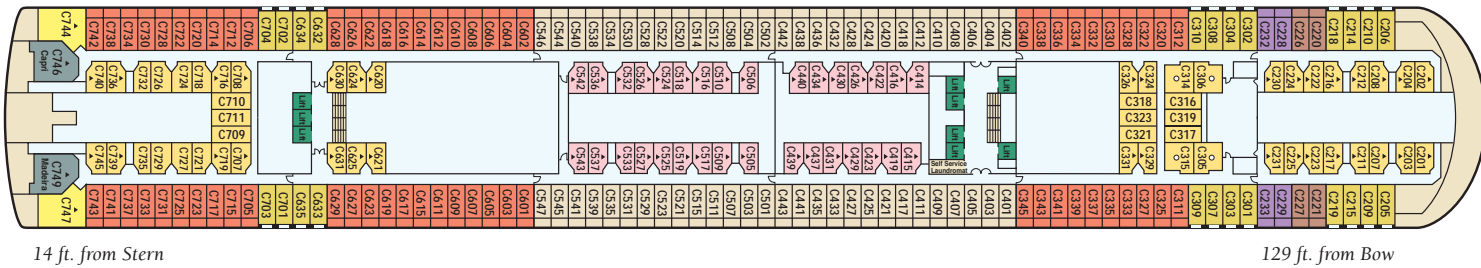
Aloha 11



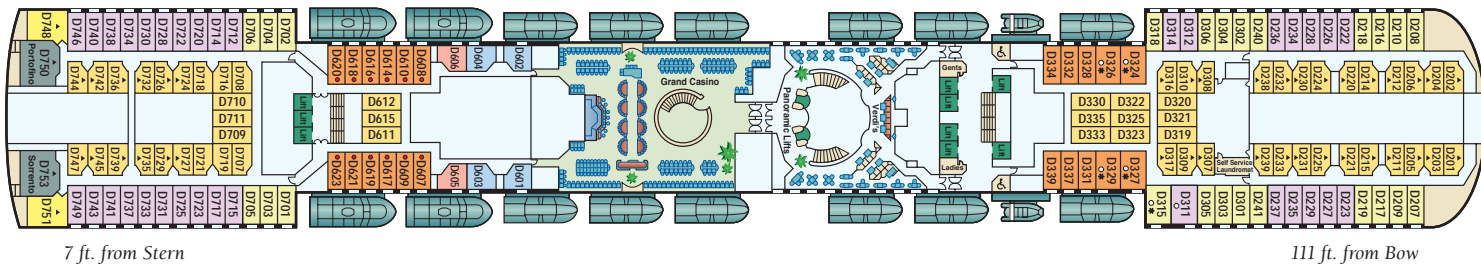
Baja 10



Caribe 9



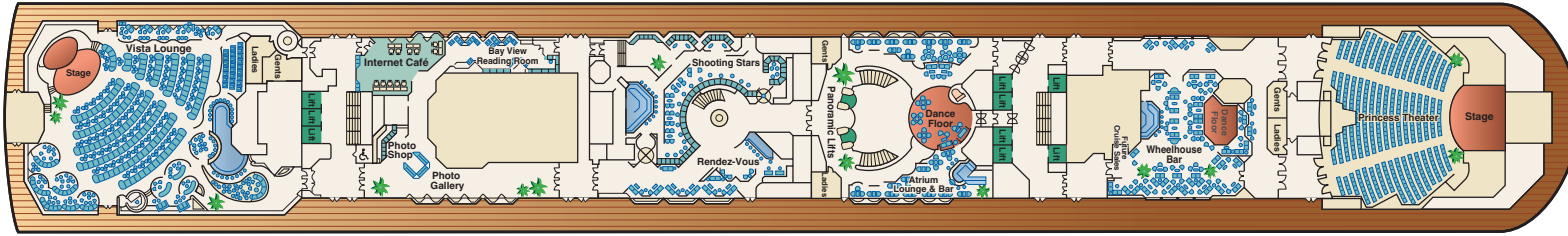
Dolphin 8



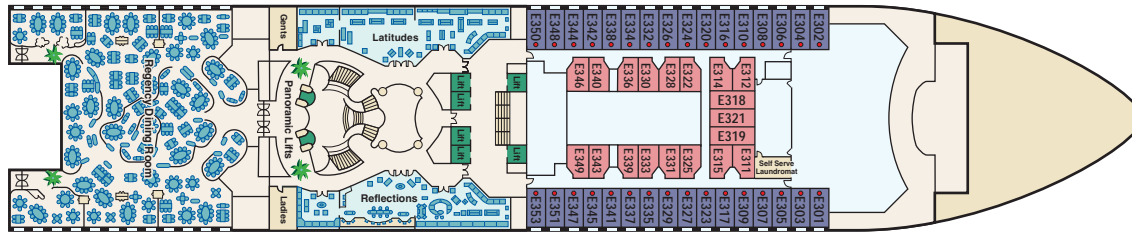
← AFT

FORWARD →

Promenade 7

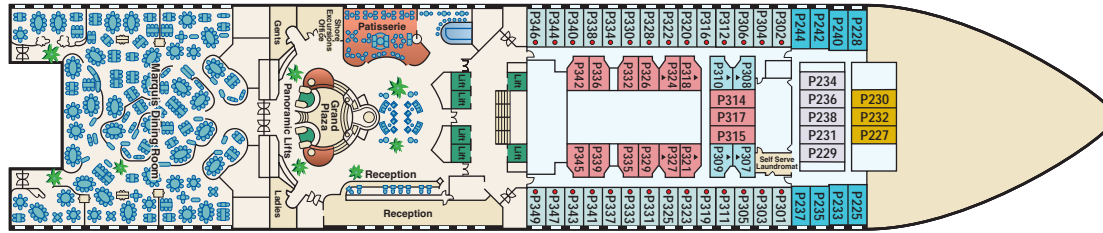


Emerald 6



530 ft. from Stern 208 ft. from Bow

Plaza 5



530 ft. from Stern 176 ft. from Bow

STATEROOM DESCRIPTION

- AA** BAJA, CARIBE, DOLPHIN: Suite with queen-size bed and balcony
- AB** BAJA, CARIBE, DOLPHIN: Mini-suite with queen-size bed and balcony
- AC** BAJA: Mini-suite with queen-size bed and balcony
- BA** ALOHA, RIVIERA: Balcony two lower beds
- BB** ALOHA, BAJA: Balcony two lower beds
- BC** BAJA, CARIBE: Balcony two lower beds
- BD** CARIBE: Balcony two lower beds
- BE** CARIBE: Balcony two lower beds
- BF** CARIBE: Balcony two lower beds
- CC** ALOHA: Deluxe oceanview two lower beds
- C** BAJA: Deluxe oceanview two lower beds
- DD** CARIBE: Deluxe oceanview two lower beds
- D** DOLPHIN: Oceanview two lower beds
- EE** DOLPHIN: Oceanview two lower beds
- E** EMERALD: Oceanview two lower beds
- FF** PLAZA: Oceanview two lower beds
- F** PLAZA: Oceanview two lower beds
- GG** DOLPHIN: Oceanview two lower beds (obstructed view)
- G** DOLPHIN: Oceanview two lower beds (obstructed view)
- HH** DOLPHIN: Oceanview two lower beds (obstructed view)
- I** ALOHA, RIVIERA: Interior two lower beds
- I** ALOHA, BAJA: Interior two lower beds
- J** BAJA, CARIBE: Interior two lower beds
- J** CARIBE, DOLPHIN: Interior two lower beds
- K** EMERALD, PLAZA: Interior two lower beds
- L** PLAZA: Interior two lower beds
- M** PLAZA: Interior two lower beds
- N** PLAZA: Interior two lower beds

visit princess.com for virtual tours and photos of staterooms

◦ Wheelchair-accessible stateroom • Will accommodate third and fourth person ▲ Will accommodate third person * Two lower beds not convertible to queen

Note: Some areas of the ship are not accessible to wheelchairs and scooters.